

## Mezzanine Inspection Report

REVISION 2

Date: 11/10/2014	Station Name: C15 Huntington North	Mezzanine #: 050	Completed By: Balkis Hassane
------------------	------------------------------------	------------------	------------------------------

### Summary

Scoping of the communications ducts for faregate arrays were only partially completed due to obstructions and collapsed ducts. Upper communications duct in faregate array was collapsed and pull strings were not installed. The lower communications duct was scoped and pull strings installed however, duct is in poor condition due to extensive corrosion and water damage. Upper and lower power ducts successfully scoped. Power run from kiosk to AFC panel only partially scoped. Duct from kiosk to AFC panel was partially scoped but duct was collapsed approximately 20' from kiosk and duct had standing water. Scoping was attempted from AFC panel towards kiosk, but the duct was collapsed near the panel. Pull string was not installed between kiosk and AFC panel.

Scanning was performed at this station. It was found that a new duct could be installed parallel to the existing duct run from kiosk to AFC panel along the East wall. A new handhole for the 45 degree bend is proposed for access to the proposed duct near the covered 45 degree bend of the existing duct. The new duct will continue to a second proposed handhole on the mezzanine floor and then go under the wall and run vertically up into the existing junction box directly below the AFC panel.

Photos and drawings are for reference purposes only; see new schematic drawing/proposed pathway on last page.

### Scoping of Faregate Array(s)

Task	Yes/No	Notes
<b>Communications Duct – Upper Faregate Array (4 Gates)</b>		
Was video scoping completed for the entire duct run?	No	Refer to WMATA Huntington North Upper Comm Duct Video (1).avi and WMATA Huntington North Upper Comm Duct Video (2).avi files.
Were pull strings installed at all faregates in the array?	No	
Were there any obstructions or blockages? Provide details of type and specific location.	Yes	Scoping was only partially completed due to collapsed duct
Is the duct at capacity? Provide additional details about the dimensions of ducts and number of wires.	N/A	6" duct
<b>Communications Duct - Lower Faregate Array (3 Gates)</b>		
Was video scoping completed for the entire duct run?	Yes	Refer to WMATA Huntington North Lower Comm Duct Video (1).avi and WMATA Huntington North Lower Comm Duct Video (2).avi files.
Were pull strings installed at all faregates in the array?	Yes	
Were there any obstructions or blockages? Provide details of type and specific location.	No	Extensive corrosion and water damage in duct
Is the duct at capacity? Provide additional details about the dimensions of ducts and number of wires.	No	6" duct less than 10 wires
<b>Power Duct - Upper Faregate Array (4 Gates)</b>		
Was video scoping completed for the entire duct run?	Yes	Refer to WMATA Huntington North Upper Power Duct Video (1).avi file.
Were there any obstructions or blockages? Provide details of type and specific location.	No	Moderate corrosion in duct
Is the duct at capacity? Provide additional details about the dimensions of ducts and number of wires.	No	6" duct less than 10 wires
<b>Power Duct - Lower Faregate Array (3 Gates)</b>		
Was video scoping completed for the entire duct run?	Yes	Refer to WMATA Huntington North Lower Power Duct Video (1).avi file.
Were there any obstructions or blockages? Provide details of type and specific location.	No	3" duct at capacity and could not scope but 6" duct in good condition
Is the duct at capacity? Provide additional details about the dimensions of ducts and number of wires.	No	3" duct at capacity, 6" duct less than 10 wires


Scoping of Power Duct - Kiosk to AFC Panel		
Task	Yes/No	Notes
<b>Kiosk to 45 degree bend (35' run)</b>		
Was video scoping completed for the entire duct / conduit run?	No	Refer to WMATA Huntington North Power Feed Kiosk Duct Video (1).avi file.
Was pull string installed?	No	
Were there any obstructions or blockages? Provide details of type and specific location.	Yes	Duct was collapsed approximately 20' from kiosk
Is the duct / conduit at capacity? Provide additional details about the dimensions of duct / conduit and number of wires.	No	3" duct
<b>45 degree bend to AFC Panel (75' run)</b>		
Was video scoping completed for the entire duct / conduit run?	No	No video was taken due to collapsed duct at AFC panel and no access to handhole in mezzanine floor
Was pull string installed?	No	
Were there any obstructions or blockages? Provide details of type and specific location.	Yes	Duct collapsed at AFC panel
Is the duct / conduit at capacity? Provide additional details about the dimensions of duct / conduit and number of wires.	No	6" duct
<b>Observations / Issues / Next Steps</b>		
<p>No visible access to existing handhole for duct run from kiosk to AFC panel.</p> <p>Total proposed duct run is approximately 110' from kiosk to AFC panel.</p>		
<b>Sign Off</b>		
	<b>GFP Representative</b>	<b>WMATA PRGM</b>
<b>Name:</b>	Balkis Hassane	
<b>Signature:</b>		
<b>Date:</b>	11/10/2014	

Photo #1 – C15 Huntington North: Mezzanine floor towards kiosk

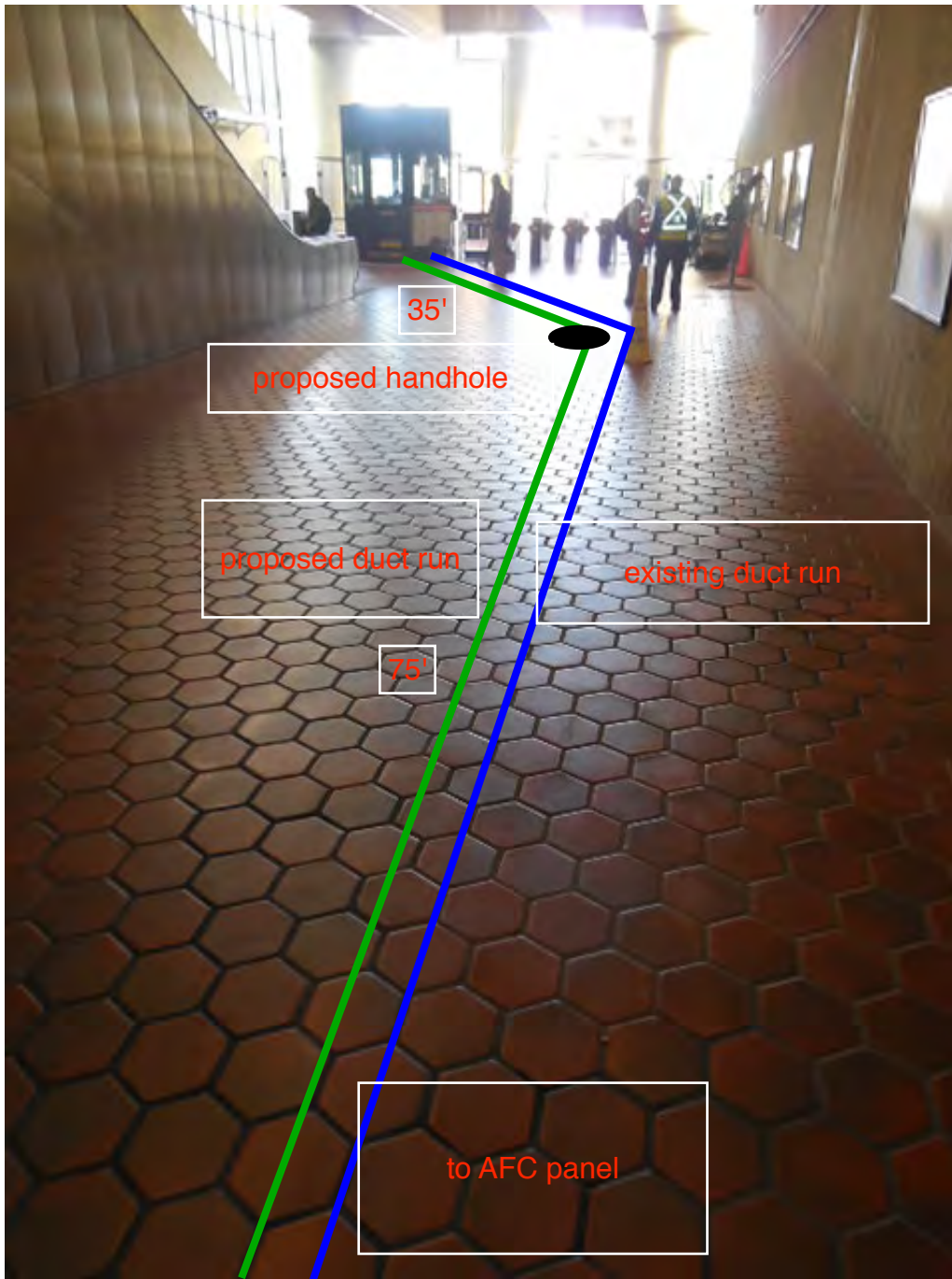
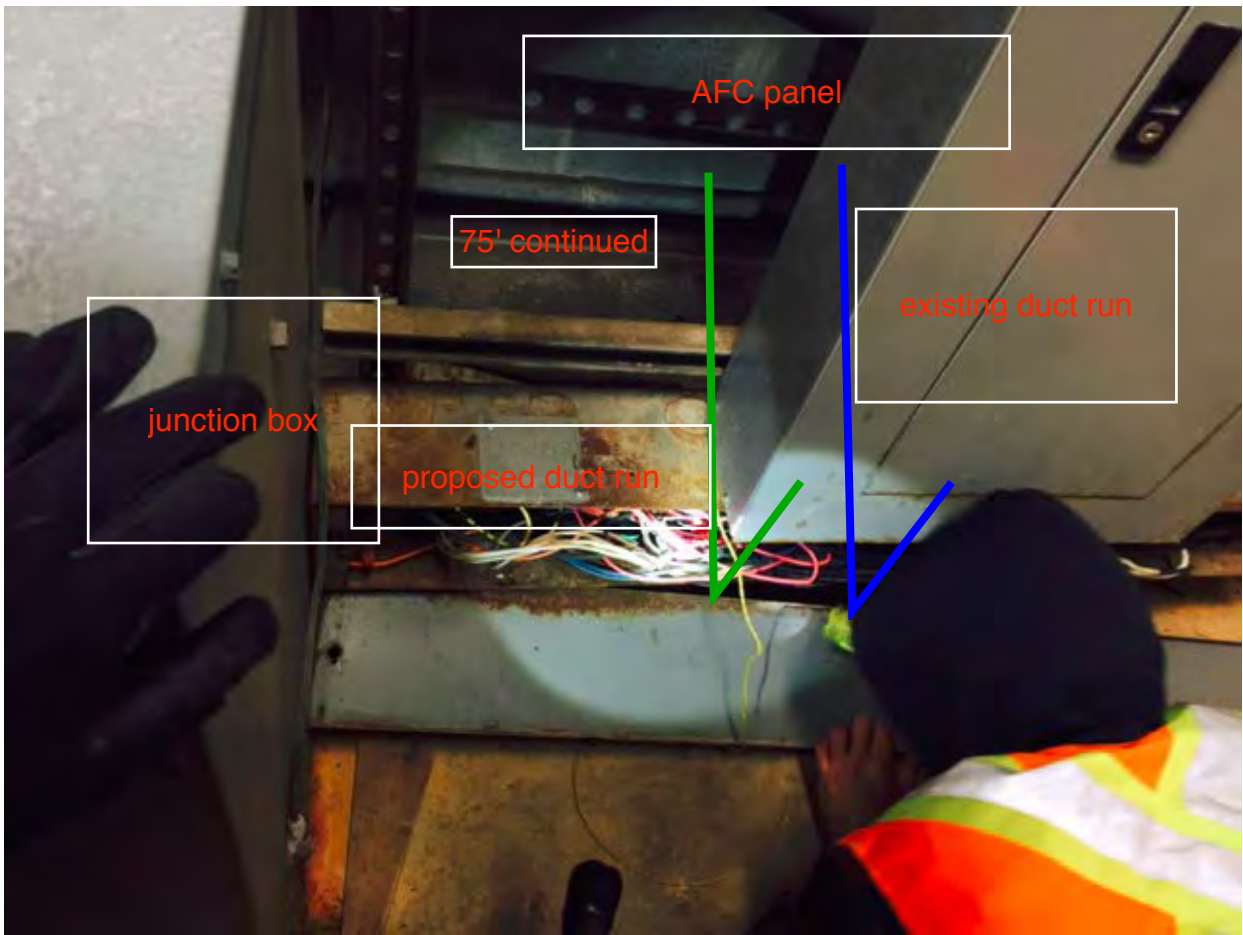


Photo #2 – C15 Huntington North: AFC panel and junction box directly below it

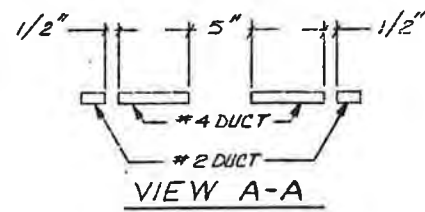
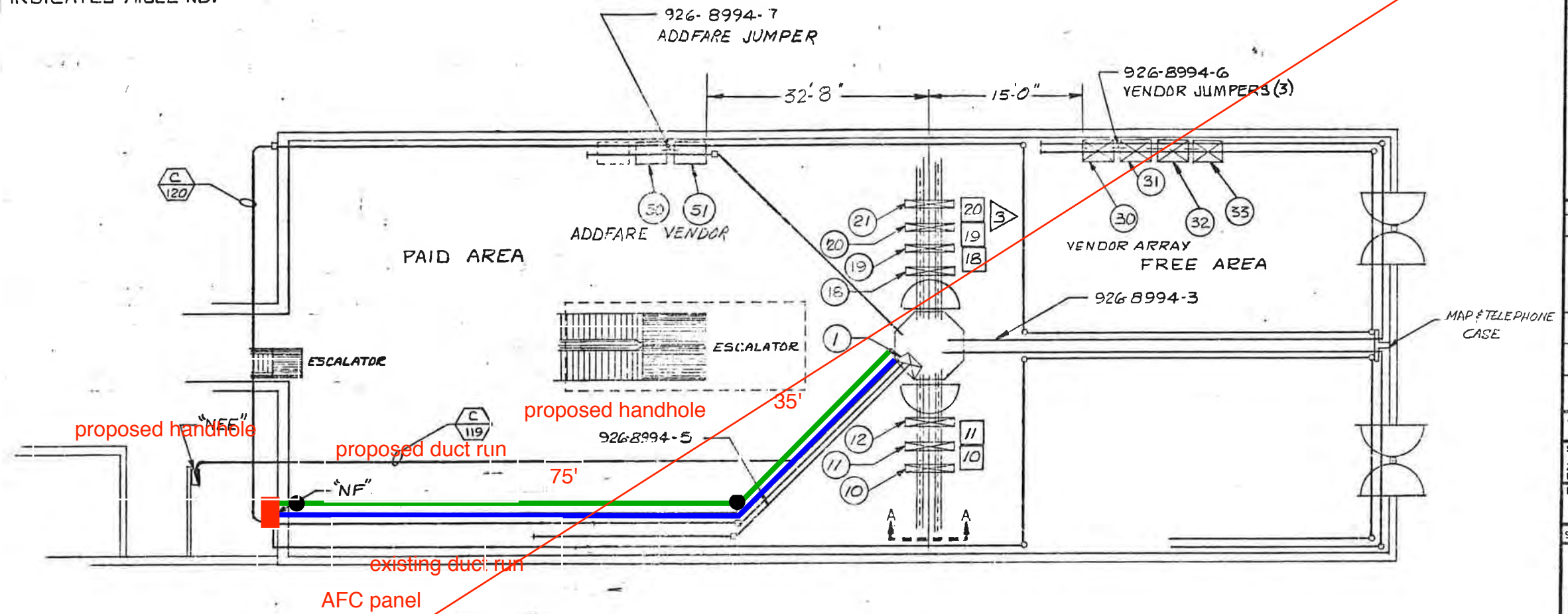
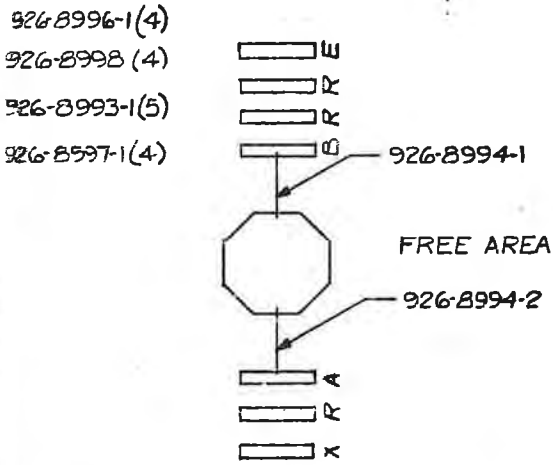




NOTES:

1. THE MINIMUM OPERATIONAL MACHINE INVENTORY IS REFERENCED ON THIS DRAWING BY THE "X" DRAWN THROUGH THE MACHINE.
2. FOR REFERENCE DRAWINGS USED SEE SUPPORT DOCUMENTATION PACKAGE FOR THIS MEZZANINE.

③ (X) INDICATES POSITION NO. [X] INDICATES AISLE NO.



PANEL NF					
POSITION NO.	MACHINE TYPE	SERIAL NO.	CIRCUIT BREAKER NO.	BREAKER SIZE (AMPS)	WIRE SIZE (AWG)
1	DADS	DS8071	KIOSK	20	
10	EXIT GATE	GX4075	1	20	8
11	REVGATE	GR7274	3	20	8
12	A GATE	GR5056	5	20	8
18	B GATE	GB6054	7	20	8
19	REVGATE	GR7284	9	20	8
20	REVGATE	GR7273	11	20	8
21	ENTRY	GN3071	13	20	8
30	VENDOR	FV1347	2	20	6
31	VENDOR	FV1344	4	20	6
32	VENDOR	FV1348	6	20	6
33	VENDOR	FV1292	8	20	6
50	ADDFARE	AM2130	10	20	6
51	ADDFARE	AM2131	12	20	6

See new schematic drawing/proposed pathway on last page

- 1 INSTALLATION PLAN NORTH  
 AS BUILT DRAWING

DO NOT SCALE DRAWING

UNLESS OTHERWISE SPECIFIED  
 DIMENSIONS ARE IN INCHES  
 TOLERANCES ON BREAK SHARP EDGES 0.10 MAX  
 DECIMALS: .XX ± .03 .XXX ± .010  
 HOLES ANGLES: ± 0.5 DEG.

0.125 THRU .125: +.004 - .001  
 .125 THRU .250: +.005 - .001  
 .251 THRU .500: +.006 - .001  
 .501 THRU .750: +.008 - .001  
 .751 THRU 1.000: +.010 - .001

CONTRACT NUMBER  
 DRAWING NUMBER 926-0417  
 SHEET 1 OF 2

CUBIC WESTERN DATA  
 5600 KENYAN MESA ROAD, POST OFFICE BOX 1077, SAN DIEGO, CA 92138  
 A Subsidiary of Cubic Corporation

INSTALLATION PLAN  
 ADMINISTRATION STATION NORTH

DRAWN: ALEBERIDGE  
 CHECKED: [Signature]  
 DESIGN: [Signature]  
 ENG'G: [Signature]  
 APPROVAL: [Signature]

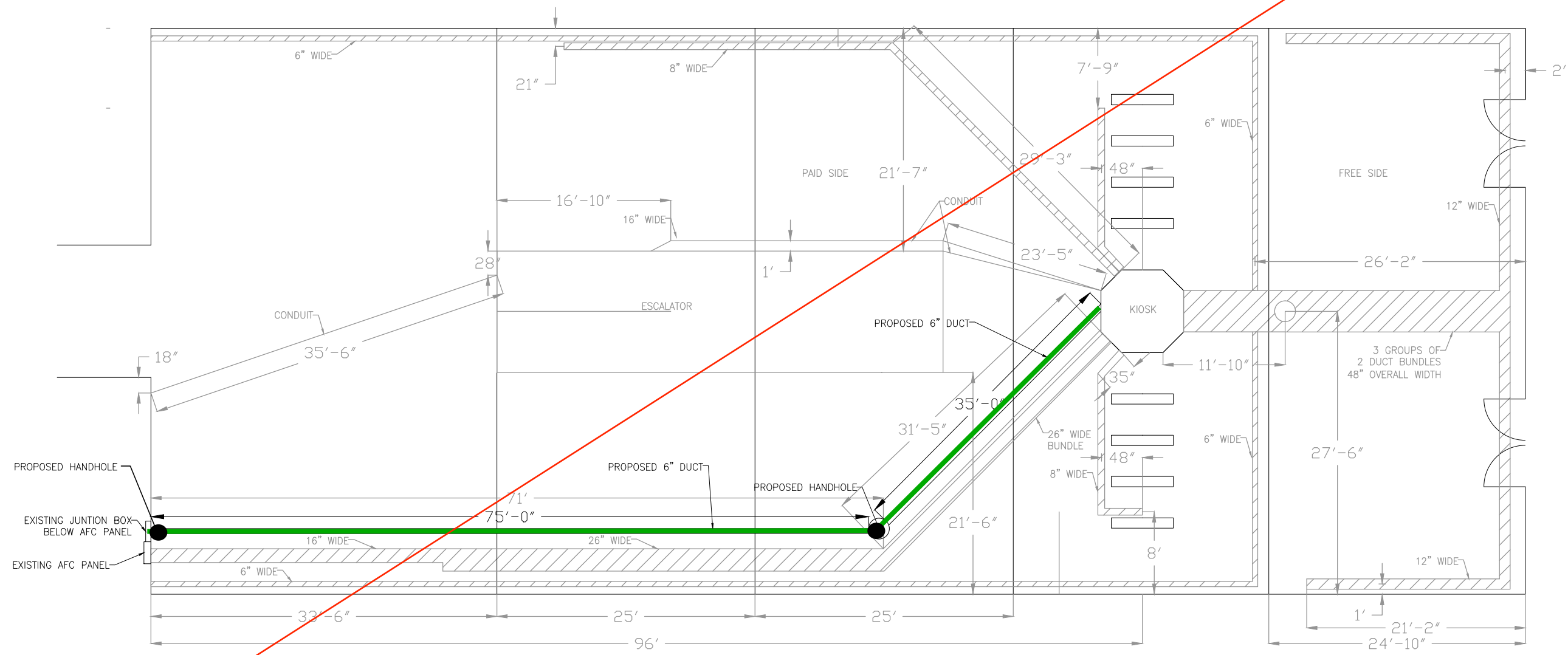
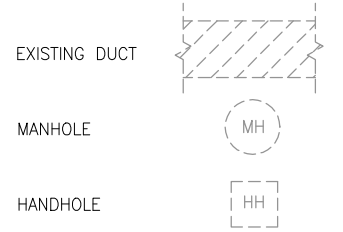
926-0417  
 94987

**PLAN NOTES:**

1. DIMENSIONS ARE IN FEET AND INCHES.
2. DIMENSIONS ARE FOR REFERENCE ONLY.
3. EXISTING IN-FLOOR DUCTS/CONDUITS WERE IDENTIFIED USING A PORTABLE GPR SCANNING DEVICE.
4. THE SCANNING COVERAGE IS LIMITED TO THE MEZZANINE FLOOR ONLY.
5. GPR SCANNING HAS THE FOLLOWING LIMITATIONS: (i) 12 INCHES VISIBLE SCANNING DEPTH; (ii) VISIBILITY BEYOND CONGESTED OR NEAR SURFACE REINFORCEMENT LAYERS; (iii) DETECTION OF PVC AND OTHER NON-METALLIC OBJECTS (iv) DETERMINATION OF SIZE AND EXTENTS OF SUBSURFACE ANOMALIES SUCH AS SLAB VOIDS OR REBAR SIZES; AND (v) VISIBILITY WHEN VARIABLE MOISTURE CONDITIONS EXIST IN THE SUBSTRATE.

See new schematic drawing/proposed pathway on last page

**LEGEND:**



**HUNTINGTON NORTH STATION**  
SCALE: NOT TO SCALE

CONTRACT NO. XXXXXX

DESIGNED	C. LOOSE	02-15
DRAWN	C. LOOSE	02-15
CHECKED	M. BUTLER	02-15
APPROVED		

REFERENCE DRAWINGS	
NUMBER	DESCRIPTION

REVISIONS		
DATE	BY	DESCRIPTION

WASHINGTON METROPOLITAN AREA TRANSIT AUTHORITY  
DEPARTMENT OF TRANSIT INFRASTRUCTURE AND ENGINEERING SERVICES  
OFFICE OF INFRASTRUCTURE RENEWAL PROGRAM

**GFP** A Gannett Fleming/Parsons JOINT VENTURE

APPROVED \_\_\_\_\_ SUBMITTED \_\_\_\_\_ PROJECT MANAGER

15-NEPP-01  
IN - FLOOR DUCT INSPECTIONS  
C15 Huntington North  
PROPOSED POWER DUCT RUN

SCALE: NOT TO SCALE DRAWING NO. C15-E-100 XXX



NOTES:

1. THE MINIMUM OPERATIONAL MACHINE INVENTORY IS REFERENCED ON THIS DRAWING BY THE "X" DRAWN THROUGH THE MACHINE.
  2. FOR REFERENCE DRAWINGS USED SEE SUPPORT DOCUMENTATION PACKAGE FOR THIS MEZZANINE.
3. (X) INDICATES POSITION NO. [X] INDICATES AISLE NO.

50

DO NOT SCALE DRAWING

UNLESS OTHERWISE SPECIFIED DIMENSIONS ARE IN INCHES. TOLERANCES ON FINISH EDGES .010 MAX. DIMENSIONS ARE IN INCHES. TOLERANCES ON SHOWN EDGES .010 MAX.

DECIMALS: .XXX .03 XXX .010

HOLES ANGLES: 2 0.3 DEG.

OTHER THRU: 225 .004 .001 251 THRU 5005 .006 .001 1150 THRU 5555 .751 THRU 15002 .410 .001

CONTRACT NUMBER: D B1

DRAWING NUMBER: 926-0417

SHEET 1 OF 2

TITLE: INSTALLATION PLAN NORTH

CUBIC WESTERN DATA

5000 KILBURN WALK, SUITE 1000, SAN DIEGO, CALIF. 92138

CODE IDENT. NO. 94987

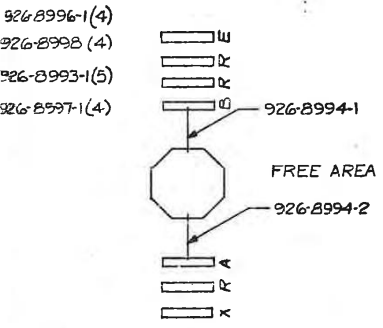
DRAWN: A. LEONARDI

CHECK: J. LEONARDI

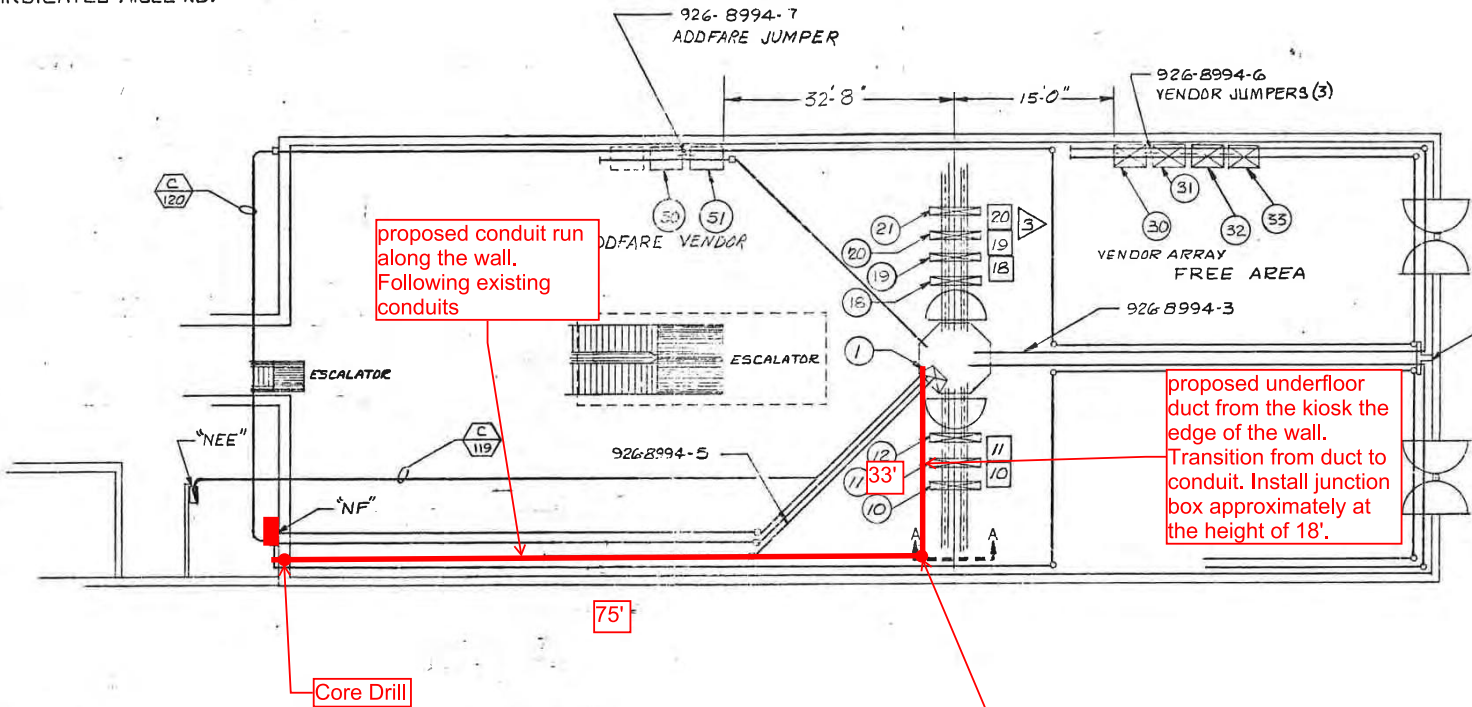
DESIGN: J. LEONARDI

REVISION: 1

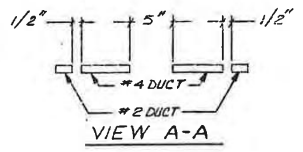
APPROVAL: 1



GATE ARRAY  
SEE 926-0353 FOR SERVICE  
GATE & RAILING DRAWING



PANEL NF						
POSITION NO.	MACHINE TYPE	SERIAL NO.	CIRCUIT BREAKER NO.	BREAKER SIZE (AMPS)	WIRE SIZE (AWG)	
1	DADS	DS8071	KIOSK	20		
10	EXIT GATE	GX 4075	1	20	8	
11	REV GATE	GR 7274	3	20	8	
12	A GATE	GR 5056	5	20	B	
18	B GATE	GB 6054	7	20	B	
19	REV GATE	GR 7284	9	20	B	
20	REV GATE	GR 7273	11	20	B	
21	ENTRY	GN 3071	13	20	B	
30	VENDOR	FV 1347	2	20	6	
31	VENDOR	FV 1344	4	20	6	
32	VENDOR	FV 1348	6	20	6	
33	VENDOR	FV 1292	8	20	6	
50	ADDFARE	AM 2130	10	20	6	
51	ADDFARE	AM 2131	12	20	6	



- 1 INSTALLATION PLAN NORTH  
AS BUILT DRAWING

## Mezzanine Inspection Report (Scoping)

<b>Date:</b> 12/12/2014	<b>Station Name:</b> C15 Huntington South	<b>Mezzanine #:</b> 051	<b>Completed By:</b> Balkis Hassane
-------------------------	---	-------------------------	-------------------------------------

### Summary


Video scoping and pull string installation was completed for the faregate array communications duct and scoping was completed for the power faregate array power duct. Pull string installation was completed for the power conduit run from the kiosk to the AFC panel. No visible hand holes on mezzanine level for conduit run from kiosk to AFC panel. See attached As-Built for assumed conduit path to AFC panel.

Scanning is not required for this mezzanine.

### Scoping of Faregate Array(s)

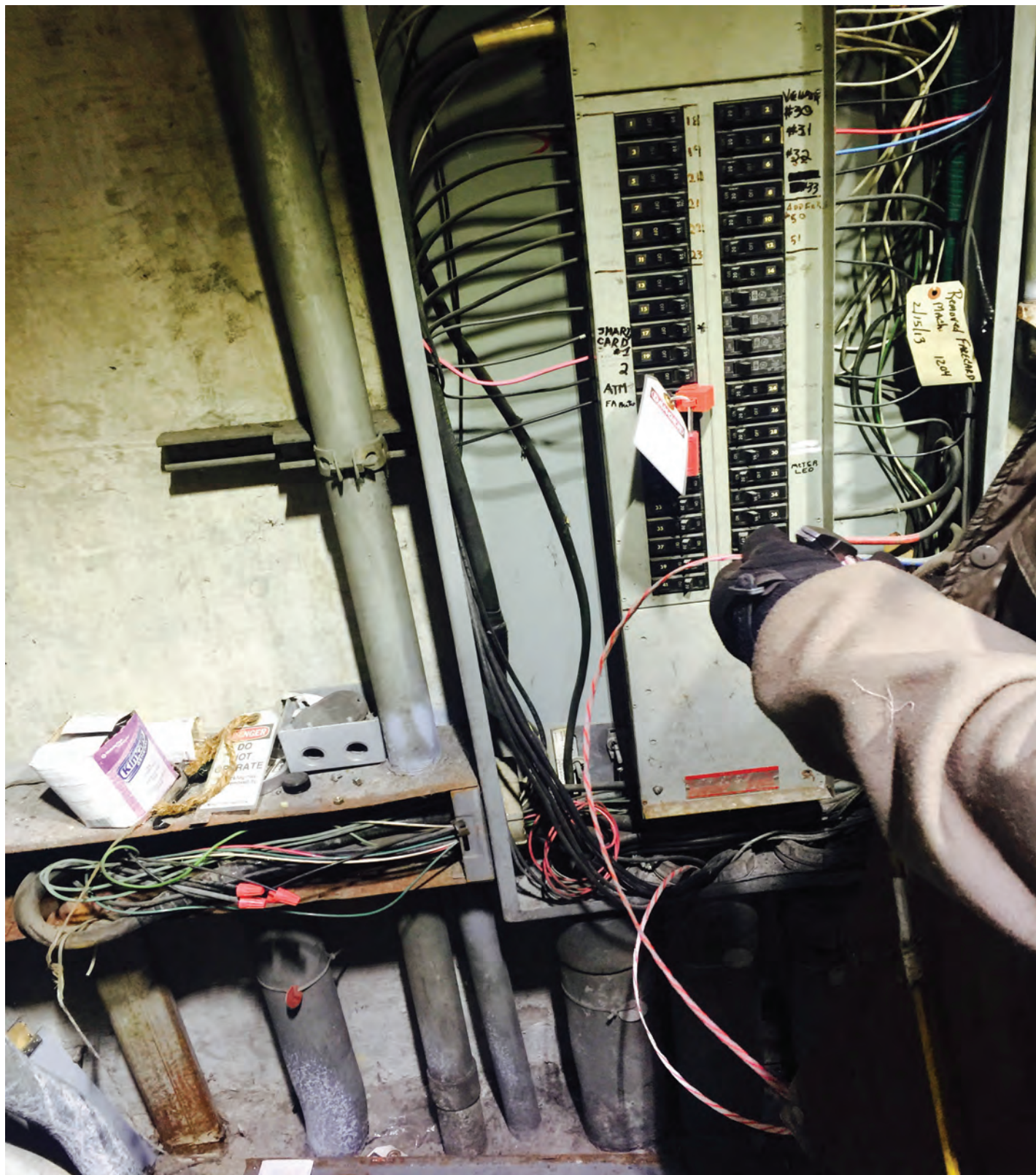
Task	Yes/No	Notes
<b>Communications Duct – Faregate Array (7 Gates)</b>		
Was video scoping completed for the entire duct run?	Yes	Refer to WMATA Huntington South Comm Duct Video 11-17-14.avi file.
Were pull strings installed at all faregates in the array?	Yes	
Were there any obstructions or blockages? Provide details of type and specific location.	No	
Is the duct at capacity? Provide additional details about the dimensions of ducts and number of wires.	No	3" and 6" ducts with less than 5 wires
<b>Power Duct - Faregate Array (7 Gates)</b>		
Was video scoping completed for the entire duct run?	Yes	Refer to WMATA Huntington South 6inch Faregate Power duct Video.avi file.
Were there any obstructions or blockages? Provide details of type and specific location.	No	Duct was a little congested, but in good condition
Is the duct at capacity? Provide additional details about the dimensions of ducts and number of wires.	No	3" and 6" ducts with less than 15 wires



Scoping of Power Duct - Kiosk to AFC Panel		
Task	Yes/No	Notes
<b>Kiosk to AFC Panel (75 foot run)</b>		
Was video scoping completed for the entire duct / conduit run?	No	Conduit – no scoping required
Was pull string installed?	Yes	
Were there any obstructions or blockages? Provide details of type and specific location.	No	
Is the duct / conduit at capacity? Provide additional details about the dimensions of duct / conduit and number of wires.	No	
<b>Observations / Issues / Next Steps</b>		
No handholes on the mezzanine level to verify exact route of conduit run from kiosk to AFC panel. It is assumed the run leaves the kiosk at a 45 degree angle towards room #416 and veers towards the AFC panel.		
<b>Sign Off</b>		
	<b>GFP Representative</b>	<b>WMATA PRGM</b>
<b>Name:</b>	Balkis Hassane	
<b>Signature:</b>		
<b>Date:</b>	12/12/2014	

co # 1: Pull String Installation on AFC Panel

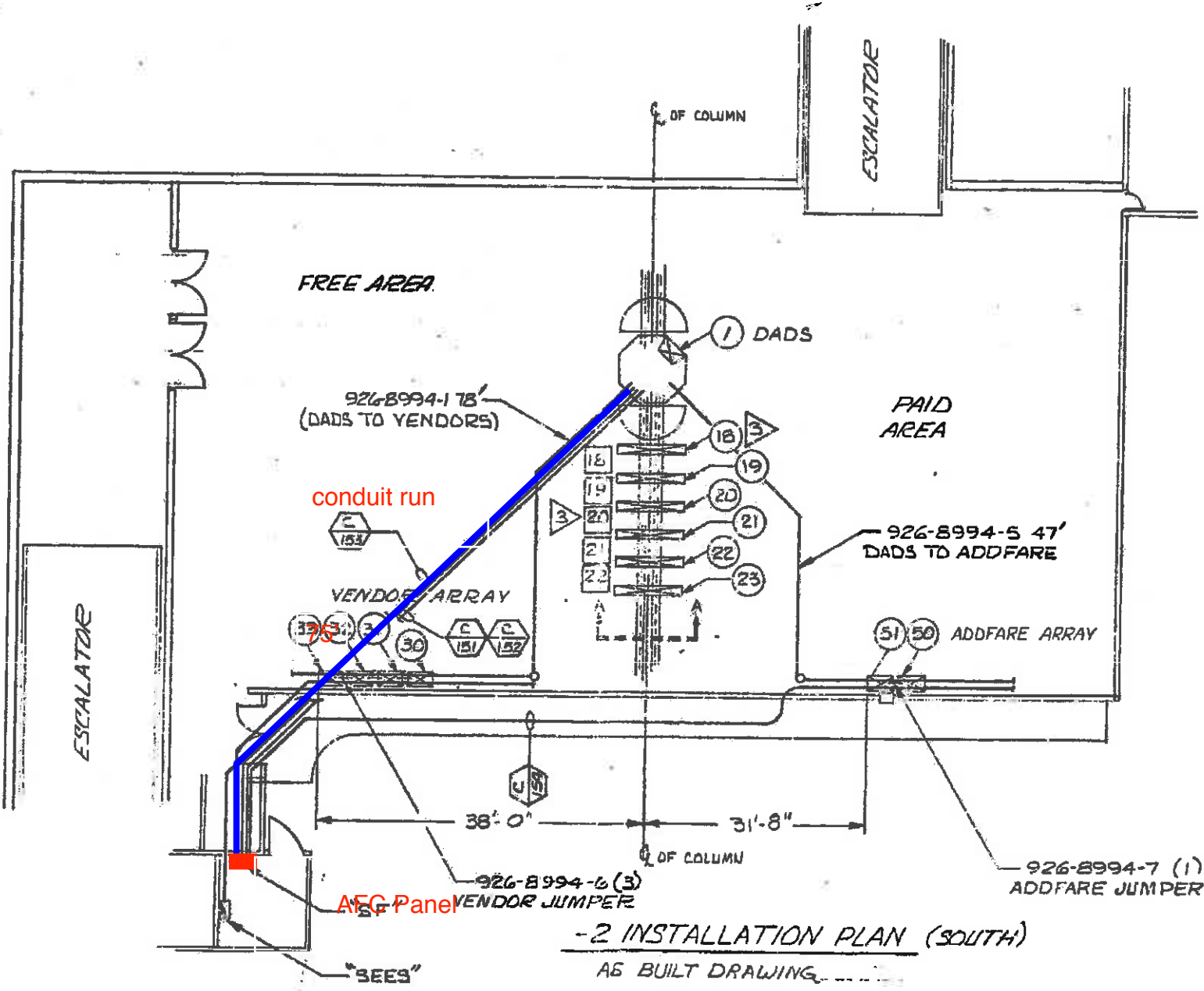
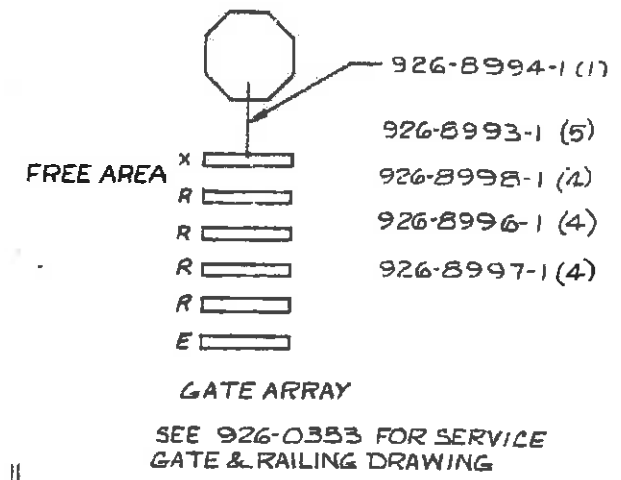
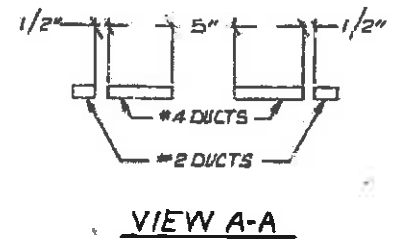
Photo 1. Pull String Installation on AFC Panel



NOTES:

1. THE MINIMUM OPERATIONAL MACHINE INVENTORY IS REFERENCED ON THIS DRAWING BY THE "X" DRAWN THROUGH THE MACHINE.
2. FOR REFERENCE DRAWINGS USED SEE SUPPORT DOCUMENTATION PACKAGE FOR THIS MEZZANINE.

⚠ (X) INDICATES POSITION NO. [X] INDICATES AISLE NO.



POSITION NO.	MACHINE TYPE	SERIAL NO.	PANEL SF		
			CIRCUIT BREAKER NO.	BREAKER SIZE (AMPS)	WIRE SIZE (AWG)
1	DADS	DS 8067	KIOSK	20	
18	EXITGATE	GX4030	1	20	6
19	REVGATE	GR 7275	3	20	6
20	REVGATE	GR 7260	5	20	6
21	REVGATE	GR 7258	7	20	6
22	REVGATE	GR 7253	9	20	6
23	ENTRYGATE	GN 3001	11	20	6
30	VENDOR	FV 1354	2	20	8
31	VENDOR	FV 1346	4	20	8
32	VENDOR	FV 1339	6	20	8
33	VENDOR	FV 1345	8	20	8
50	ADDFARE	AM 2129	10	20	8
51	ADDFARE	AM 2127	12	20	8

DO NOT SCALE DRAWING

UNLESS OTHERWISE SPECIFIED DIMENSIONS ARE IN INCHES TOLERANCES ON BREAK SHOWN EDGES 0.10 MAX DIMS THRU 1/16" ± 0.01 .XXX ± 0.10 ANGLES: 2 0.5 DEG. HOLES: 0.01 ± 0.01 501 THRU 750 ± 0.008 ± 0.01 751 THRU 1000 ± 0.012 ± 0.01

CONTRACT NUMBER

DRAWING NUMBER  
926-0417

SHEET 2 OF 2

TITLE  
INSTALLATION PLAN  
HUNTINGTON STATION SOUTH

CUBIC WESTERN DATA  
A subsidiary of Cubic Corporation  
3801 KENNEDY BLVD. IRVINE, CA 92618

CODE IDENT NO.  
94987

DRAWN: J. [Signature]  
CHECKED: [Signature]  
DESIGN: [Signature]  
REVISION: [Signature]  
ACTIVITY APPROVAL: [Signature]

926-0417